



# INDUSTRIAL WAREHOUSE SPACE

910-922 S. 10th Street, Kansas City, Kansas



**LEASE RATE: \$15/SF MODIFIED GROSS | 5,000 SF BUILDING**

#### DEMOGRAPHICS

	1 mile	3 miles	5 miles
Estimated Population	4,605	82,423	233,887
Avg. Household Income	\$50,878	\$77,679	\$95,915

- Two 10' x 14' drive-in doors
- Fully fenced and secure
- 0.51 acre of outdoor storage
- 1,500 SF office space including four private offices
- Within one mile of two major highways



CLICK HERE TO VIEW MORE  
LISTING INFORMATION

For More Information Contact:

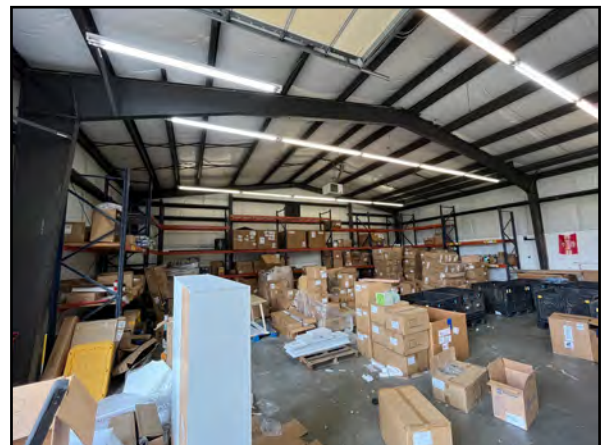
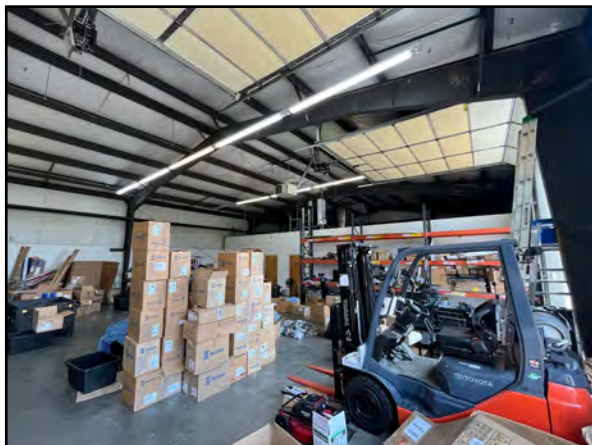
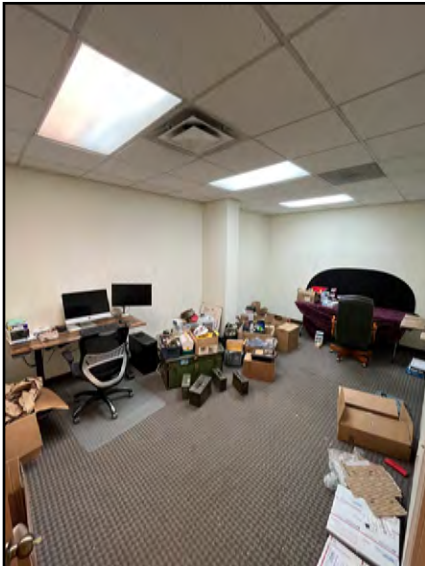
CAMREN SINCLAIR | 816.412.7352 | [csinclair@blockandco.com](mailto:csinclair@blockandco.com)

DANIEL BROCATO | 816.412.7303 | [dbrocato@blockandco.com](mailto:dbrocato@blockandco.com)

*Exclusive Agents*



## PHOTOS







# INDUSTRIAL WAREHOUSE SPACE

910-922 S. 10th Street, Kansas City, Kansas





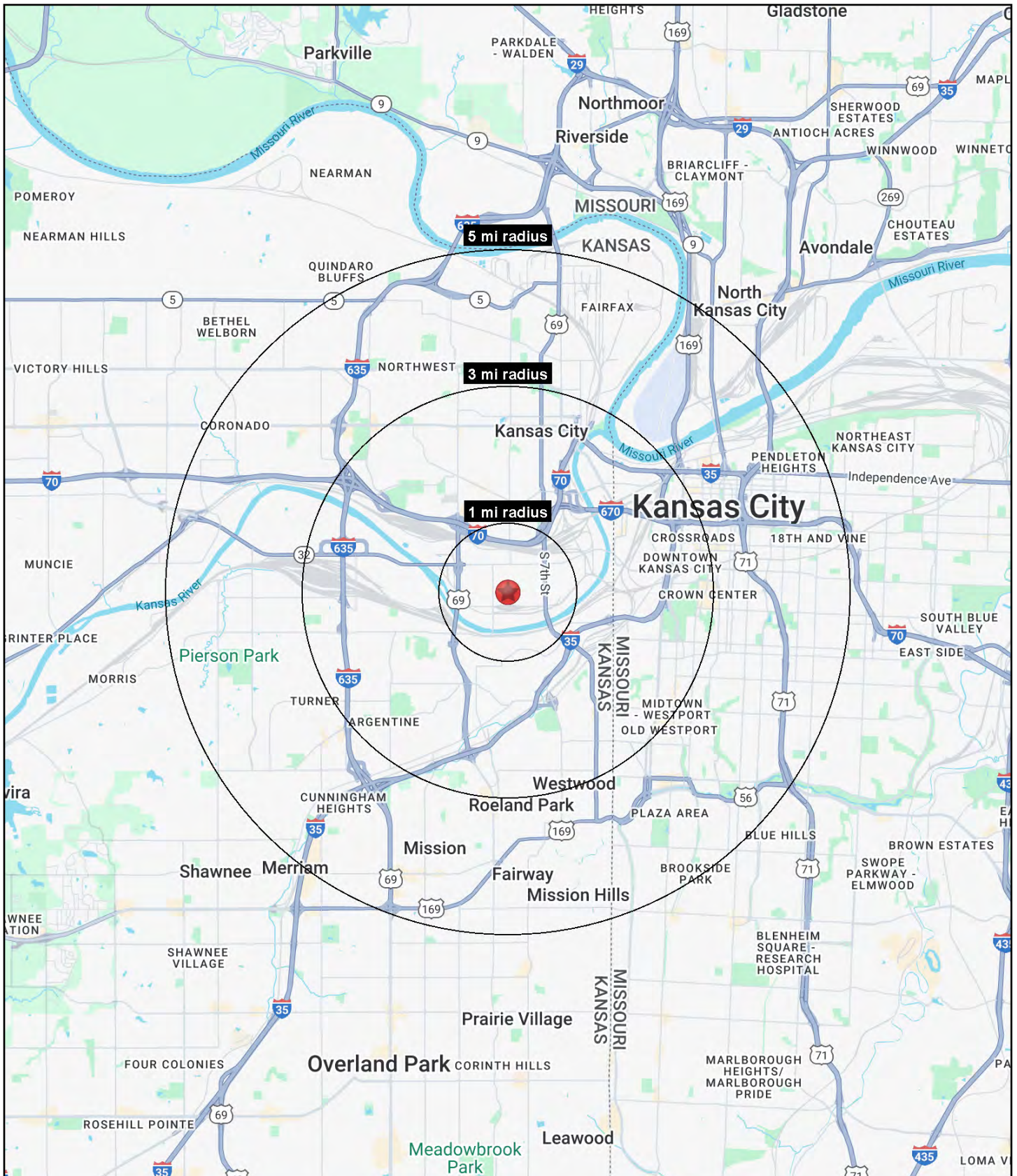


All information furnished regarding property for sale or lease is from sources deemed reliable, but no warranty or representation is made as to the accuracy thereof and the same is subject to errors, omissions, changes of prices, rental or other conditions, prior sale or lease or withdrawal without notice.



# INDUSTRIAL WAREHOUSE SPACE

910-922 S. 10th Street, Kansas City, Kansas





# INDUSTRIAL WAREHOUSE SPACE

## 910-922 S. 10th Street, Kansas City, Kansas

910 S. 10th Street Kansas City, KS 66105	1 mi radius	3 mi radius	5 mi radius
<b>Population</b>			
2025 Estimated Population	4,605	82,423	233,887
2030 Projected Population	4,502	81,924	235,722
2020 Census Population	4,810	82,742	224,986
2010 Census Population	4,769	77,403	209,322
Projected Annual Growth 2025 to 2030	-0.4%	-0.1%	0.2%
Historical Annual Growth 2010 to 2025	-0.2%	0.4%	0.8%
2025 Median Age	31.2	32.1	33.5
<b>Households</b>			
2025 Estimated Households	1,431	35,226	104,690
2030 Projected Households	1,412	35,621	107,639
2020 Census Households	1,442	33,984	97,941
2010 Census Households	1,455	31,636	89,155
Projected Annual Growth 2025 to 2030	-0.3%	0.2%	0.6%
Historical Annual Growth 2010 to 2025	-0.1%	0.8%	1.2%
<b>Race and Ethnicity</b>			
2025 Estimated White	40.7%	50.0%	53.8%
2025 Estimated Black or African American	5.8%	14.4%	20.9%
2025 Estimated Asian or Pacific Islander	1.9%	5.0%	4.1%
2025 Estimated American Indian or Native Alaskan	1.5%	1.1%	0.7%
2025 Estimated Other Races	50.1%	29.5%	20.4%
2025 Estimated Hispanic	60.0%	35.9%	23.8%
<b>Income</b>			
2025 Estimated Average Household Income	\$50,878	\$77,679	\$95,915
2025 Estimated Median Household Income	\$39,724	\$59,210	\$70,802
2025 Estimated Per Capita Income	\$16,110	\$33,427	\$43,134
<b>Education (Age 25+)</b>			
2025 Estimated Elementary (Grade Level 0 to 8)	16.1%	9.5%	6.1%
2025 Estimated Some High School (Grade Level 9 to 11)	19.1%	8.1%	6.8%
2025 Estimated High School Graduate	34.1%	26.1%	23.0%
2025 Estimated Some College	10.1%	17.0%	17.9%
2025 Estimated Associates Degree Only	3.7%	6.3%	6.4%
2025 Estimated Bachelors Degree Only	10.0%	20.5%	24.2%
2025 Estimated Graduate Degree	6.9%	12.5%	15.6%
<b>Business</b>			
2025 Estimated Total Businesses	243	5,236	14,126
2025 Estimated Total Employees	4,089	72,206	198,570
2025 Estimated Employee Population per Business	16.9	13.8	14.1
2025 Estimated Residential Population per Business	19.0	15.7	16.6

©2025, Sites USA, Chandler, Arizona, 480-491-1112 Demographic Source: Applied Geographic Solutions 5/2025, TIGER Geography - RS1